



Arab Republic of Egypt

**Central Agency for Public Mobilization
and Statistics**

Magdy mikhail rous

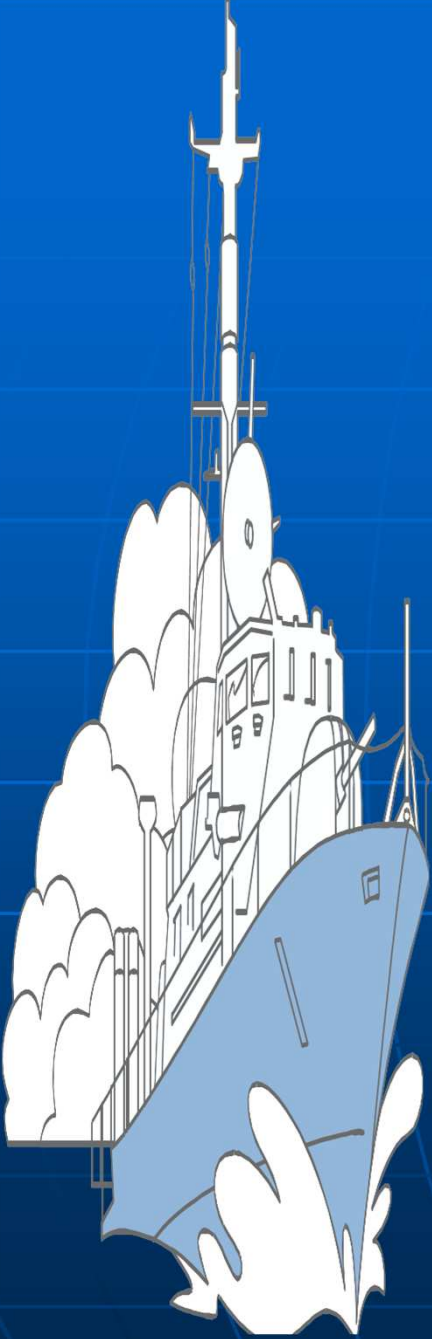
Manager of foreign trade department

**Seminar on international trade station from
12to16May2014**

In Addis Ababa Ethiopia

Contents

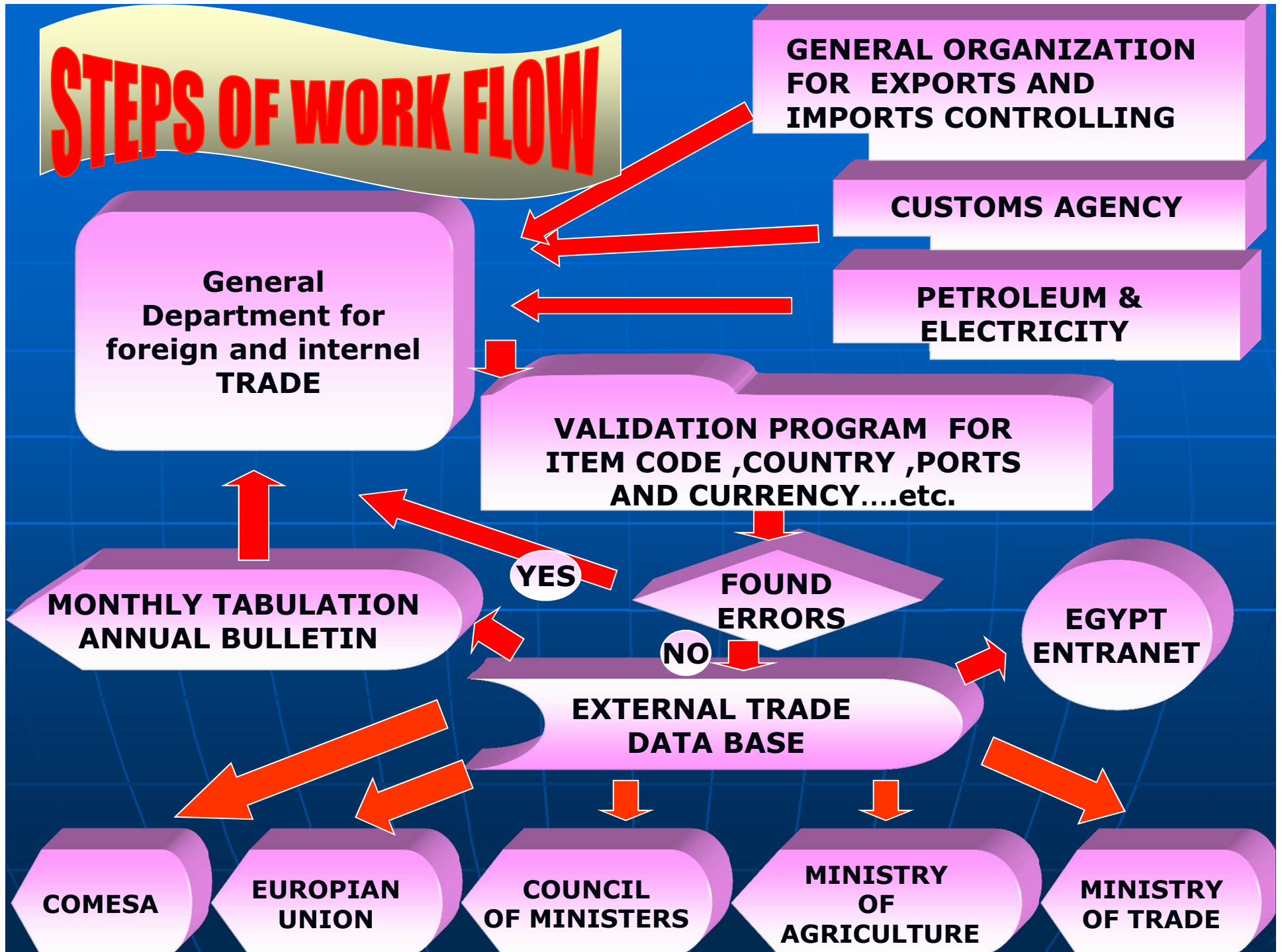
- **Introduction**
- **Flow chart of the system**
- **Input of foreign trade**
- **Rules of validation**



Introduction

- Trade statistics in the Arab Republic of Egypt is one of the main basic on which the proper planning of economic development in the country, the foreign trade statistics is the most important and oldest of statistics produced by the CAPMAS as the trade balance (exports - imports) one of the most important elements affecting in the balance of payments of the State.

STEPS OF WORK FLOW

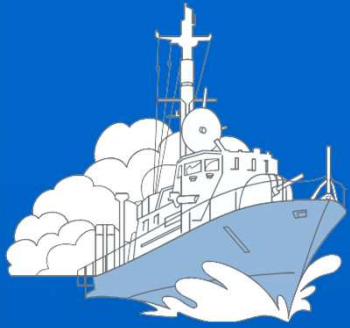


Input of foreign Trade

- The General Organization for Export and Import Control (G.O.E.I.C) provides data of the foreign trade monthly after the completion of the review and signing on in final state to be added to the database of CAPMAS.
- The Egyptian imports data of foreign trade obtained from the Information Center and Decision Support of CUSTOMS AGENCY.

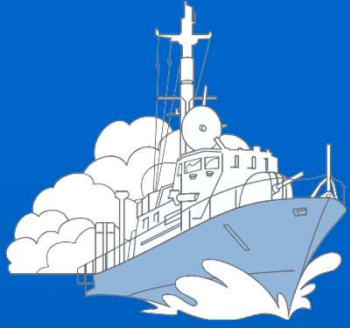
(Continued) Input of foreign Trade

- The data of oil and electricity obtained from the Ministry of Petroleum and the Ministry of Electricity.



Foreign Trade Layout Record

| Field Name | Length |
|-----------------------------|--------|
| TYPE OF TRADE | 2 |
| YEAR | 4 |
| MONTH | 2 |
| CUSTOMS CERTIFICATE NO | 9 |
| CUSTOMS CERTIFICATE DATE | 10 |
| CUSTOMS BRANCH | 6 |
| PORT OF SHIPPING | 7 |
| THE TYPE OF CUSTOMS RELEASE | 9 |
| EXPORTER AND IMPORTER CODE | 9 |



Foreign Trade Layout Record

| Field Name | Length |
|----------------------------------|--------|
| CUSTOMS ITEM | 10 |
| THE COUNTRY OF DESTINATION | 3 |
| THE COUNTRY OF ORIGIN | 3 |
| WEIGHT OR SUPPLEMENTARY QUANTITY | 14.4 |
| SUPPLEMENTARY QUANTITY UNIT | 4 |
| VALUE (L.E) | 14.4 |
| SALES TAX | 8 |
| IMPORT DUTIES | 8 |
| OTHER TAXES | 9 |

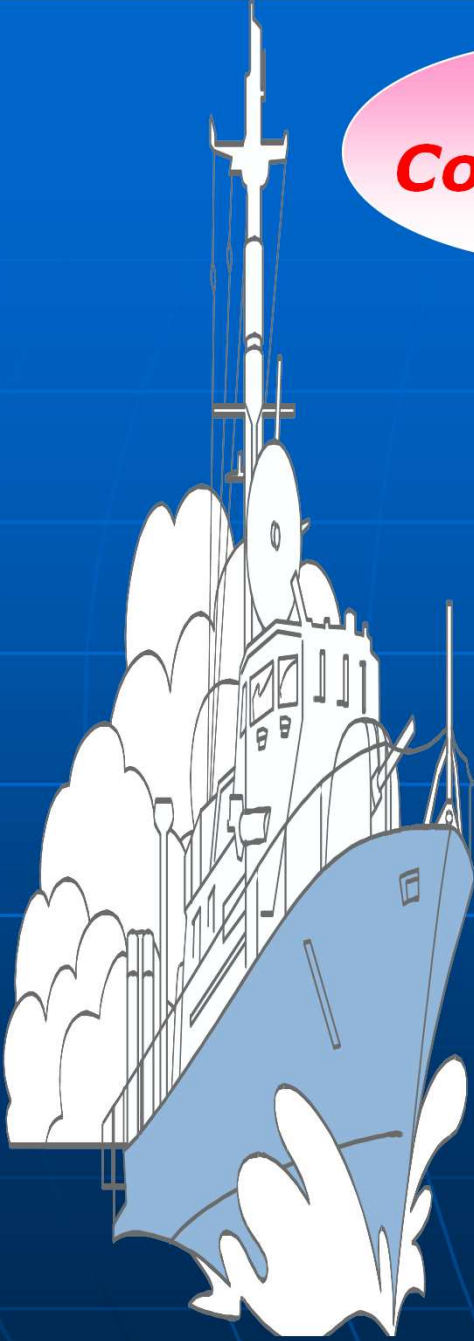
Continued input of foreign trade

- *Directory of Commodities*
- The directory of H. S. of the year 2007 applied on the data base of the foreign trade from January 2008.

Continued input of foreign trade

Directory of Ports

- Used to know the ports which commodities exported from and imported to. (2 DIGIT)



Continued input of foreign trade

Directory of Currencies

The average of currency price's obtained monthly from the Egyptian central bank)

Continued input of foreign trade

Directory of Countries

- Used to know the countries which commodities exported to and imported (2DIGIT)

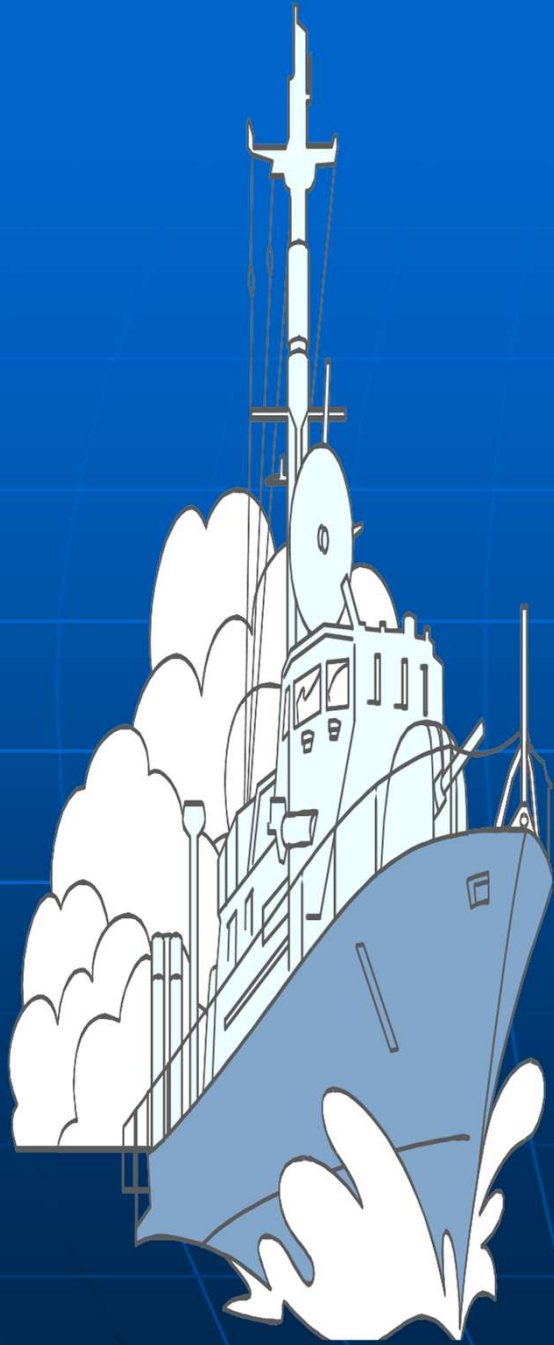


Rules of validation

The validation program is running on the data which is received from the General Authority for the control of exports and imports OR the Customs Agency to ensure the following conforming to the dictionaries in the database of the foreign trade:

ITEMS Codes according to the classification categories for the coordinated HS 2007

1. Country codes
 2. Currency codes
 3. Codes ports
- To make sure that there are no records without value or quantity
 - To make sure that the product does not take the value and the quantity together except the cotton state
 - In the end, the program print records of non-identical Or Incorrect and sent to review and correct the wrong by computer



Thanks

